

KAWASAKI STEEL GIHO

Vol.20 (1988) No.4

---

Fabrication and Erection Technique of Extremely Heavy Steel Structure for Highrise  
Building, Shenzhen Development Center, China

(Masamitsu Nagayasu)

(Katsuya Ohta)

**Fabrication and Erection Technique of Extremely  
Heavy Steel Structure for Highrise Building,  
Shenzhen Development Center, China**

要旨



Table 2 Standard procedure specification of CES welding for column-girder connection

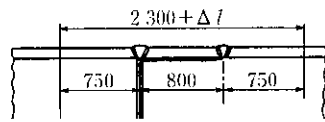






D - B

Upper flange	○
Lower flange	△
Web	□



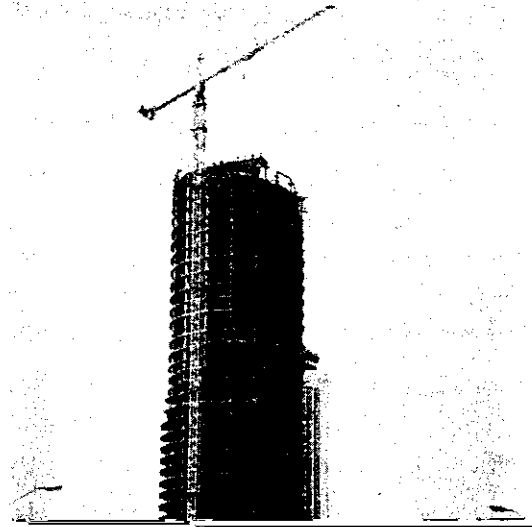
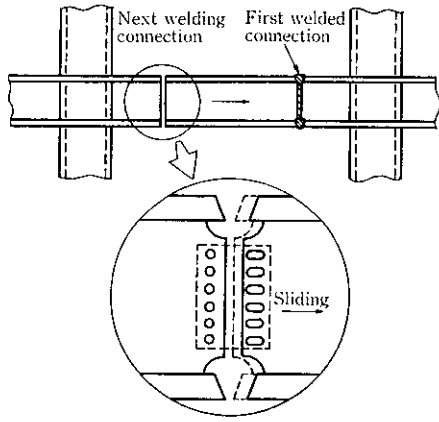


Fig. 14 Consideration to shrinkage of girder-to-girder connection due to welding